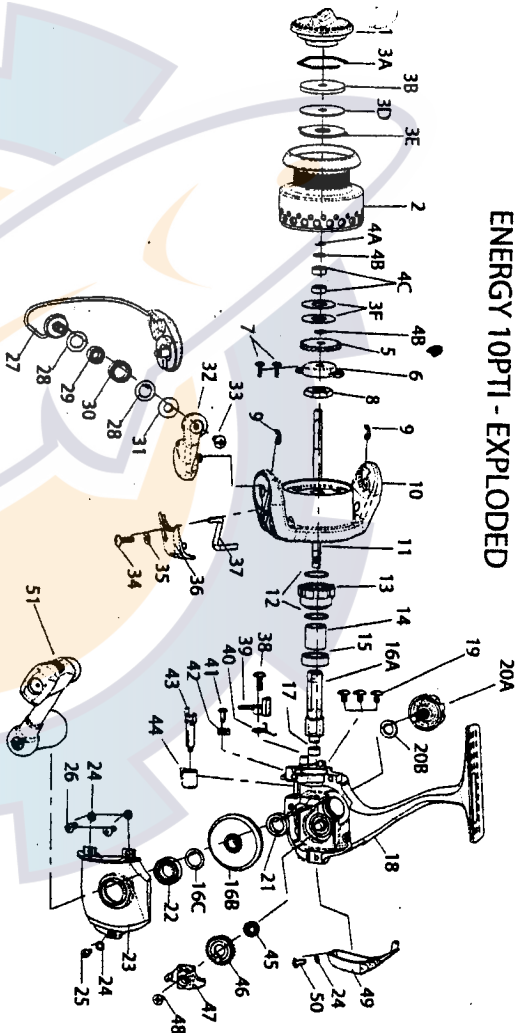


ENERGY 10PTI - EXPLODED



QTY	DESCRIPTION	QTY	DESCRIPTION	QTY	DESCRIPTION	QTY	DESCRIPTION
1	DRAG KNOB ASSEMBLY KIT	PT332-10	RT332-01	RT332-01			
2	SPOOL ASSEMBLY KIT	PT4371-01	QT4371-01	RT4371-01			
3	DRAG ASSEMBLY KIT	PT4381-01	QT4381-01	RT4381-01			
4	DRAG WASHER KIT	N/A	N/A	N/A			
5	3A-DRAG RETAINER	N/A	N/A	N/A			
6	3B-DRAG WASHER-CERAMIC	N/A	N/A	N/A			
7	3C-DRAG WASHER-KEYED TO MAIN SHAFT	N/A	N/A	N/A			
8	3D-DRAG WASHER-FIBER	N/A	N/A	N/A			
9	3E-DRAG WASHER-CLICK GEAR	PT4371-01	QT4371-01	RT4371-01			
10	SPOOL BEARING KIT	PT4371-01	QT4371-01	RT4371-01			
11	4A-SPOOL BEARING WASHER 7/8"	QTY2	QTY1	QTY1			
12	4B-SPOOL BEARING WASHER 7/8"	N/A	N/A	N/A			
13	4C-SPOOL BEARING WASHER 7/8"	N/A	N/A	N/A			
14	CLICK GEAR	RO037-01	QTY2	RO037-01			
15	MAIN SHAFT BUSHING	RQ214-01	RO214-01	SO214-01			
16	ROTOR NUT LOCK SCREW	RO094-01	RO094-01	RO094-01			
17	ROTOR NUT	SH008-01	SH008-01	TH008-01			
18	E-CLIP	GH034-01	GH034-01	GH034-01			
19	ROTOR ASSEMBLY	PQ309-55	SO309-55	SO309-55			
20	MAIN SHAFT	PT015-01	RT015-01	RT015-01			
21	CLUTCH WASHER	RQ167-01	RQ167-01	RQ167-01			
22	CLUTCH ASSEMBLY	SO390-01	SO390-01	SO390-01			
23	CLUTCH SLEEVE	RQ139-01	RQ139-01	SO139-01			
24	PINION BALL BEARING	GH028-10	BH028-01	UK028-01			
25	GEAR ASSEMBLY KIT	PT4071-01	QT4071-01	RT4071-01			
26	16B-DRIVE GEAR ASSEMBLY						
27	16C-ADJUST WASHER	RQ141-01	RQ141-01	SO141-01			
28	17-PINION BUSHING	PT001-01	QT001-01	RT001-01			
29	18-BODY	RQ141-01	RQ141-01	RT001-01			
30	BEARING SCREW	RQ141-01	RQ141-01	RT001-01			
31	HANDLE CAP SCREW KIT	RO4073-01	AT4073-03	AT4073-03			
32	20A-HANDLE SCREW WASHER	RO073-01	TH105-01	TH105-01			
33	GEAR SHAFT BALL BEARING	CH027-01	CH028-01	BL157-01			
34	BODY COVER	PO023-55	RO023-55	SO023-55			
35	BODY COVER SCREW WASHER	RQ142-01	RO142-01	RQ142-01			
36	BODY COVER SCREW	SO057-01	SO057-01	SO057-01			
37	LINE ROLLER WASHER	PQ347-51	RO347-51	SO347-51			
38	LINE ROLLER BALL BEARING	GH202-01	GH202-01	DH102-01			
39	LINE ROLLER COLLAR	PQ102-51	GH202-01	GH202-01			
40	ARM LEVER ASSEMBLY	PQ307-01	RO307-01	SO307-01			
41	ARM LEVER SCREW	AG108-07	AG108-07	AG108-07			
42	ARM LEVER COVER SCREW	GU077-15	GU077-15	GU077-15			
43	ARM LEVER COVER WASHER	SO142-01	SO142-01	SO142-01			
44	ARM LEVER COVER	RO087-01	RO087-01	SO087-01			
45	KICK LEVER	PQ019-01	RO019-01	SO019-01			
46	ANTI-REVERSE PAWL SCREW	RO077-01	RO077-01	SO077-01			
47	ANTI-REVERSE PAWL	PQ063-01	RO063-01	SO063-01			
48	ANTI-REVERSE PAWL SPRING	PQ061-01	RO061-01	SO061-01			
49	ANTI-REVERSE CAM SPRING	RO089-01	RO089-01	SO089-01			
50	ANTI-REVERSE CAM	PT090-01	QT090-01	RT090-01			
51	ANTI-REVERSE LEVER	RO059-01	RO059-01	SO059-01			
52	OSG GEAR BALL BEARING	EH158-01	EH158-01	EH158-01			
53	OSCILLATOR SLIDER	PQ053-51	RO053-51	SO053-51			
54	MAIN SHAFT SCREW	PQ025-01	RO025-01	SO025-01			
55	BODY REAR COVER SCREW	PQ140-55	RQ140-55	SO140-55			
56	HANDLE ASSEMBLY	PT318-51	QT318-51	RT318-51			